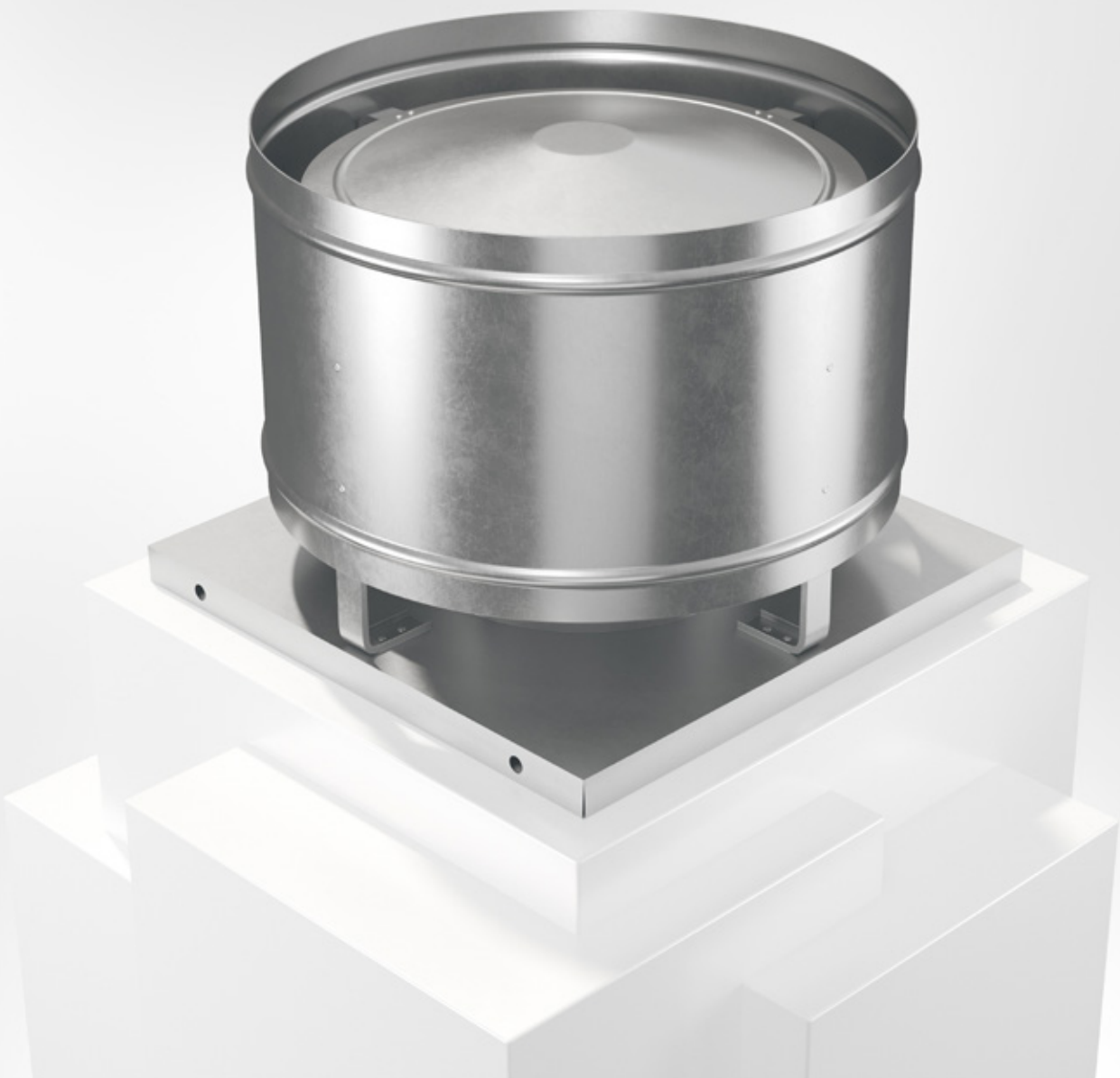


BREA

Intake or Exhaust Air Cowl



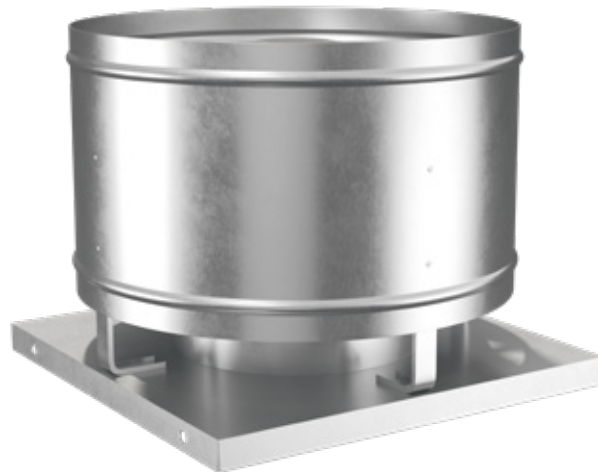
COWLS



03/12/2024



Intake or Exhaust Air Cowl BREA



Quick facts

- Sizes from Ø100 mm to Ø1250 mm
- Internal water deflector
- Sizes 100-315 are fitted with a socket connection, sizes 400-1250 are fitted with flange connection
- Compatible (with transition unit) with Roof inlet BRTG or BRTL
- Magnelis as standard
- Available in powder coated finish corrosivity class C4
- Available in MagiCAD

Use

BREA is circular air cowl for use in air conditioning and industrial plants. It can be used for either intake or exhaust air.

Sizes 100-315 is fitted with a socket connection, sizes 400 -1250 are fitted with a flange connection. BREA can be fitted with roof inlet BRTG, and can be built with a transition which suits BRTG. The air opening can when ordered be fitted with rodent proof wire mesh.

From size 800 and up, the cowl is equipped with eyebolts as standard and can also be supplied as accessories for smaller sizes.

Material, surface treatment

The air cowl is manufactured as standard in Magnelis, corrosivity class C4 and can be supplied in the desired colour, see www.bevent-rasch.com. The air cowl can also be supplied in stainless steel AISI 316L (EN 1.4404).

Specification

Example:

Air Cowl

BREA - 400 - 5 - 0 - 6

Size, mm
see size table

Material:

Magnelis ZM120 C4 = 5

Stainless AISI 316L – EN 1.4404 = 3

Surface treatment:

Unfinished = 0

Powder coated = 1*

* Colour code should be stated in plain text, see www.bevent-rasch.com

Connection:

Socket (size 100-315) = 0

Flange (size 400-1500) = 1

Sleeve coupling (built-in) = 6-18

(indicate size of transformation piece as per size table)

Accessories:

Roof inlet BRTG

Roof inlet BRTL (size 100-200)

Rodent proof wire mesh (state in writing)

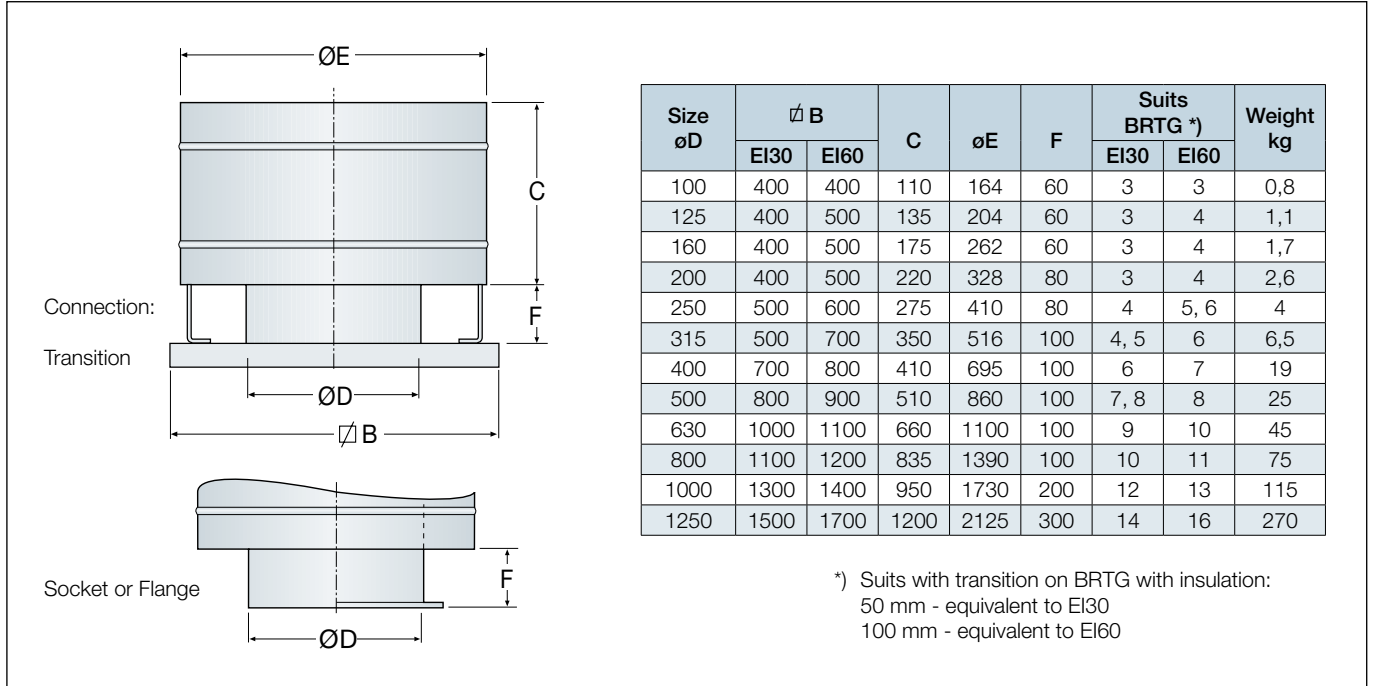
Counter flange BRFL

Special

The air cowl can be supplied in many different custom designs in terms of dimensions, choice of material, etc. Contact Bevent Rasch.



Dimensions



Selection chart

