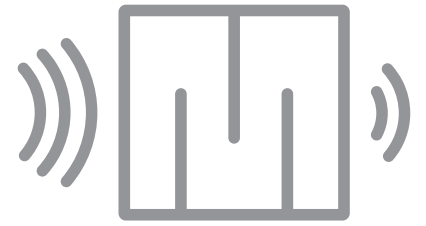
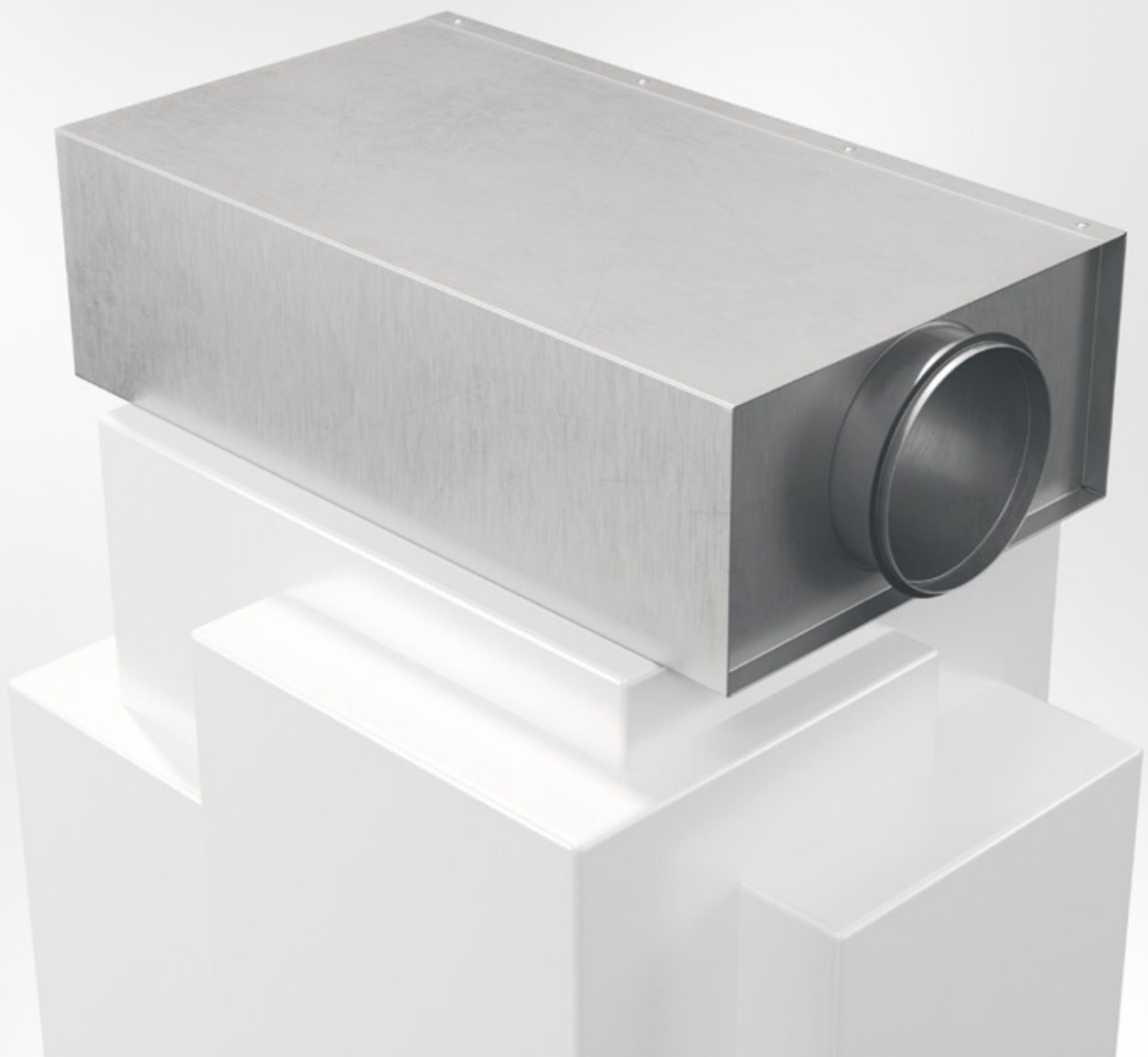


# LFAS-L

Rectangular silencer  
with circular connection



SILENCERS



27/03/2025



## Rectangular silencer with circular connection LFAS-L



### Quick facts

- Connection Ø100 mm to Ø400 mm
- Two standard lengths, 500 or 1000 mm
- Air tightness class D
- Lowbuilding height
- Sizes Ø100 to Ø160 Can be molded into concrete
- Supplied with 4 mounting angles for easier installation

### Use

Rectangular silencer with circular connection LFAS-L is intended for attenuation in ventilation systems. Size 100-160 designed to be molded into a concrete bearings. The low height also facilitate assembly in tiny roofspaces. LFAS-L adresses good practice with respect to cleanability, fibre-proofing, emissions and micro-organisms.

### Materials and surface treatment

LFAS-L is manufactured as standard in galvanised sheet steel with perforated inner tube. The absorption material consists of mineral wool with a surface layer of glass fibre reinforced staple fibre felt. The connections are provided with rubber seals and fit standard Spiro ducts. The silencer can also be manufactured in stainless steel or Magnelis.

### Specification

Example:

**Silencer**

**LFAS-L - 100 - 500 - 1**

Connection, Ød mm

Length, mm

*Material:*

Galvanized sheet steel

= 1

Stainless EN 1.4404 (SS2343)

= 3

Magnelis ZM120 (C4)

= 5

### Assembly

When hanging the silencer, mounting devices that go around the outer jacket must be used. LFAS-L must not be mounted only suspended from their connection points. Suspensions should be carried out according to applicable requirements. See for example the manual "Practical solutions fire protection – ventilation".

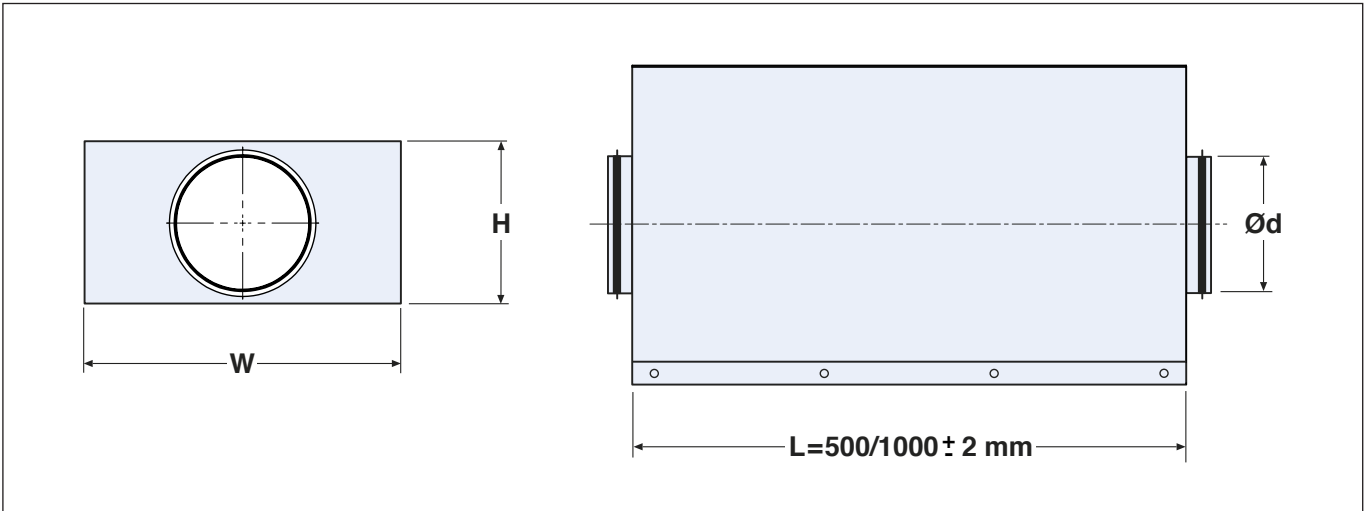
At molding the silencer shall be assembled according to assembly instructions.

### Maintenance

LFAS-L is under normal operating conditions, maintenancefree.



## Size and weight



## Insertion Loss

Pressure drop for LFAS-L is calculated as for duct of same size.

Ød mm	L mm	W mm	H mm	Weight kg	Insertion loss in octave band dB							
					Centre frequency Hz							
					63	125	250	500	1K	2K	4K	8K
100	500	265	123	3,8	8	8	11	17	18	38	45	16
	1000	265	123	7,1	12	16	19	30	35	58	60	25
125	500	288	149	4,3	11	5	10	13	15	33	34	8
	1000	288	149	8,2	15	12	16	24	30	57	54	15
160	500	327	183	5,2	11	4	10	11	13	27	25	6
	1000	327	183	10	14	10	16	20	24	50	38	8
200	500	367	223	6,4	9	5	9	10	11	25	21	5
	1000	367	223	12,3	10	8	13	15	20	42	30	7
250	500	415	273	7,9	6	5	8	8	11	15	15	6
	1000	415	273	14,6	7	7	12	13	18	32	24	6
315	500	481	339	9,8	4	5	7	7	10	13	16	7
	1000	481	339	17,9	5	6	10	11	17	22	17	8
400	500	565	423	12,2	1	3	6	6	9	13	10	7
	1000	565	423	22,3	2	5	8	10	15	18	13	11