

R30

Expansion module



FIRE SAFETY



MRB3_{TRE}

28/08/2017

www.bevent-rasch.com



BEVENT RASCH

AIR SOLUTIONS – FOR A BETTER TOMORROW



Quick facts

- 59 dampers can be connected
- Input for 24 V

Expansion module R30 – For expansion of the number of dampers

The R30 is an expansion module that is used to connect more than 59 dampers to an RCTC. 59 dampers can be connected to each R30 and 3 R30 modules can subsequently be connected to an RCTC. The maximum number is thus 236 dampers.

The R30 forms a sub-bus and damper modules are addressed separately in the RCTC. Sectionalising can then be conducted as preferred.

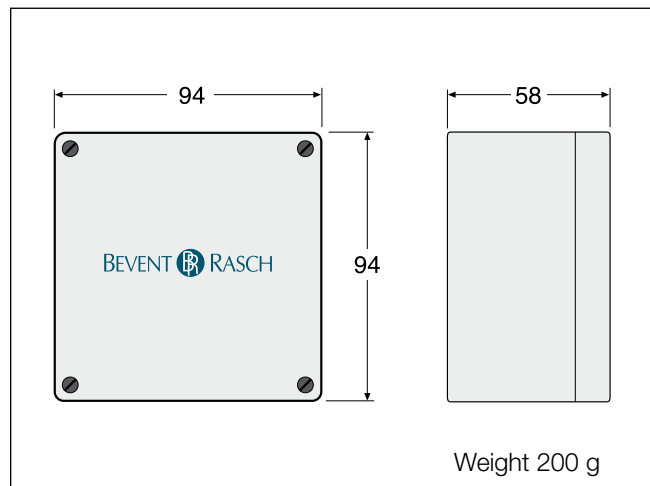
For several R30 modules in the same installation, these must be addressed. This can be done upon delivery or easily after installation.

Please notice R30 expansion modules may not be in series.

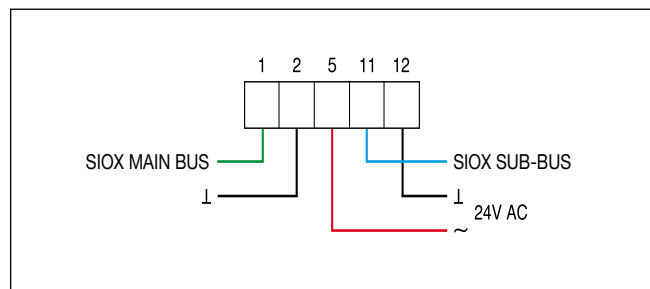
Specifications

Expansion module R30

Dimensions



Wiring diagram



Addressing

